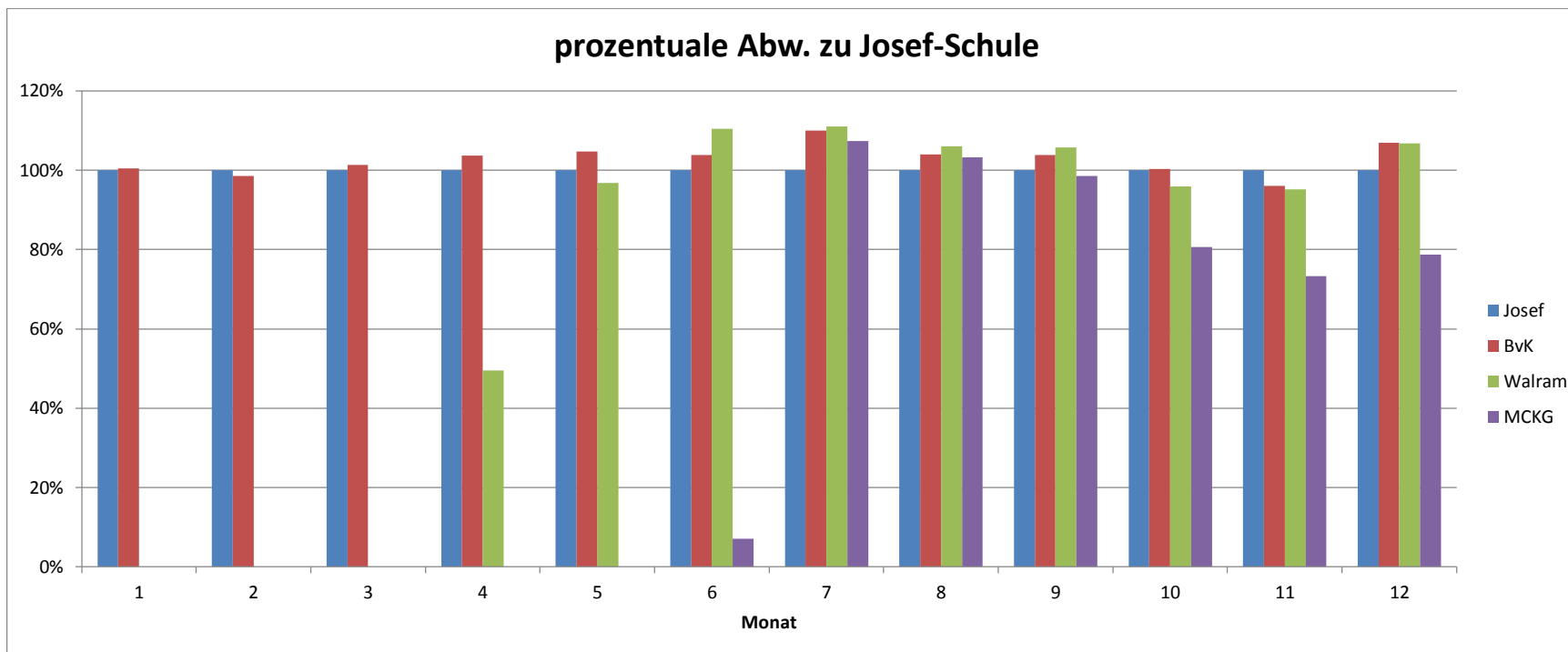


Jahr 2012

Summe von kWh/kWp		PV-Anlage			
Monat		Josef	BvK	Walram	MCKG
1		23,93	24,03		
2		41,42	40,83		
3		85,30	86,42	0,00	
4		96,02	99,57	47,58	
5		131,33	137,45	127,20	
6		103,79	107,73	114,68	7,38
7		119,35	131,22	132,60	128,19
8		129,47	134,64	137,27	133,74
9		83,72	86,89	88,50	82,54
10		63,30	63,47	60,76	51,07
11		30,02	28,85	28,56	22,01
12		12,47	13,33	13,31	9,81
Gesamtergebnis		920,12	954,44	750,45	434,74



Jahr 2012

prozentuale Abw. kWh/kWp	PV-Anlage			
Monat	Josef	BvK	Walram	MCKG
1	100%	100,42%	#NULL!	#NULL!
2	100%	98,59%	#NULL!	#NULL!
3	100%	101,31%	0,00%	#NULL!
4	100%	103,70%	49,55%	#NULL!
5	100%	104,67%	96,86%	#NULL!
6	100%	103,79%	110,50%	7,11%
7	100%	109,94%	111,10%	107,41%
8	100%	104,00%	106,03%	103,30%
9	100%	103,79%	105,71%	98,59%
10	100%	100,26%	95,98%	80,67%
11	100%	96,10%	95,13%	73,30%
12	100%	106,97%	106,76%	78,69%
Gesamtergebnis	100%	103,73%	81,56%	47,25%